



Quality Laboratory Reagents for  
Research and Clinical Testing since 1997



## YOUR PRIMARY SOURCE FOR:



Diagnostic Assays



Research Assays



Antibodies



Proteins/Peptides

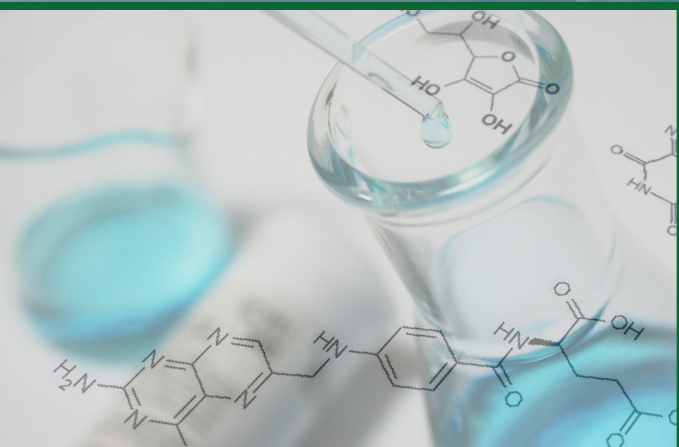


Cell Transfection



PCR

# Who We Are



**Distributor, Supplier, Laboratory**  
**3000 Products**  
**As Your Needs Dictate**

- Global distributor of quality ELISA and RIA diagnostic and research kits, antibodies and proteins
- Over 3000 products supported by a certified staff, state-of-the-art facility and dependable customer service

- |                                  |                            |
|----------------------------------|----------------------------|
| - Autoimmune                     | - Endocrinology / Hormones |
| - Biogenic Amines & Neurology    | - Gastroenterology         |
| - Bone & Mineral Metabolism      | - Immunology               |
| - Brain Disorders & Neuroscience | - Infectious Disease       |
| - Cardiovascular                 | - Drug & Anti-Drug         |
| - Cytokines & Cell Signalling    | - Oncology                 |
| - Diabetes & Obesity             | - PCR                      |

Contact us 1.888.523.1246 • [info@ibl-america.com](mailto:info@ibl-america.com)  
We'll discuss your needs and answer all your questions  
8201 Central Ave NE Suite P, Minneapolis, MN 55432

